

## Enabling StyleEase Macros in Word 2003 & Earlier Versions

In Word 2003 and earlier version, you need to:

1. [Set Word's macro security level to medium](#), which means that you need to explicitly enable the running of macros in any document that contains them.
2. When you first create a StyleEase document, [select the Always trust macros option](#).

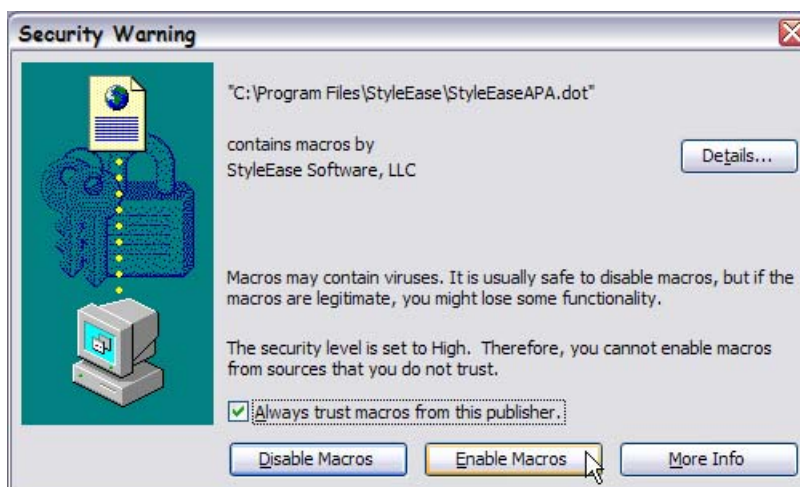
### Setting the Macro Security Level

Follow these steps to set Word's macro security level:

1. Open Microsoft Word (without StyleEase)
2. Select **T**ools from Word's menu bar
3. Select **M**acro, and then select **S**ecurity
4. Change the setting to **M**edium.

### Trusting StyleEase Macros

When you create a StyleEase document, Word will ask if you want to enable macros in the document. You can enable macros in the document by clicking the Enable Macros button:



If you also click the **A**lways trust macros from this publisher option, you'll be able to use StyleEase documents without being asked each time that you create or open a StyleEase document. We strongly recommend selecting this option.